

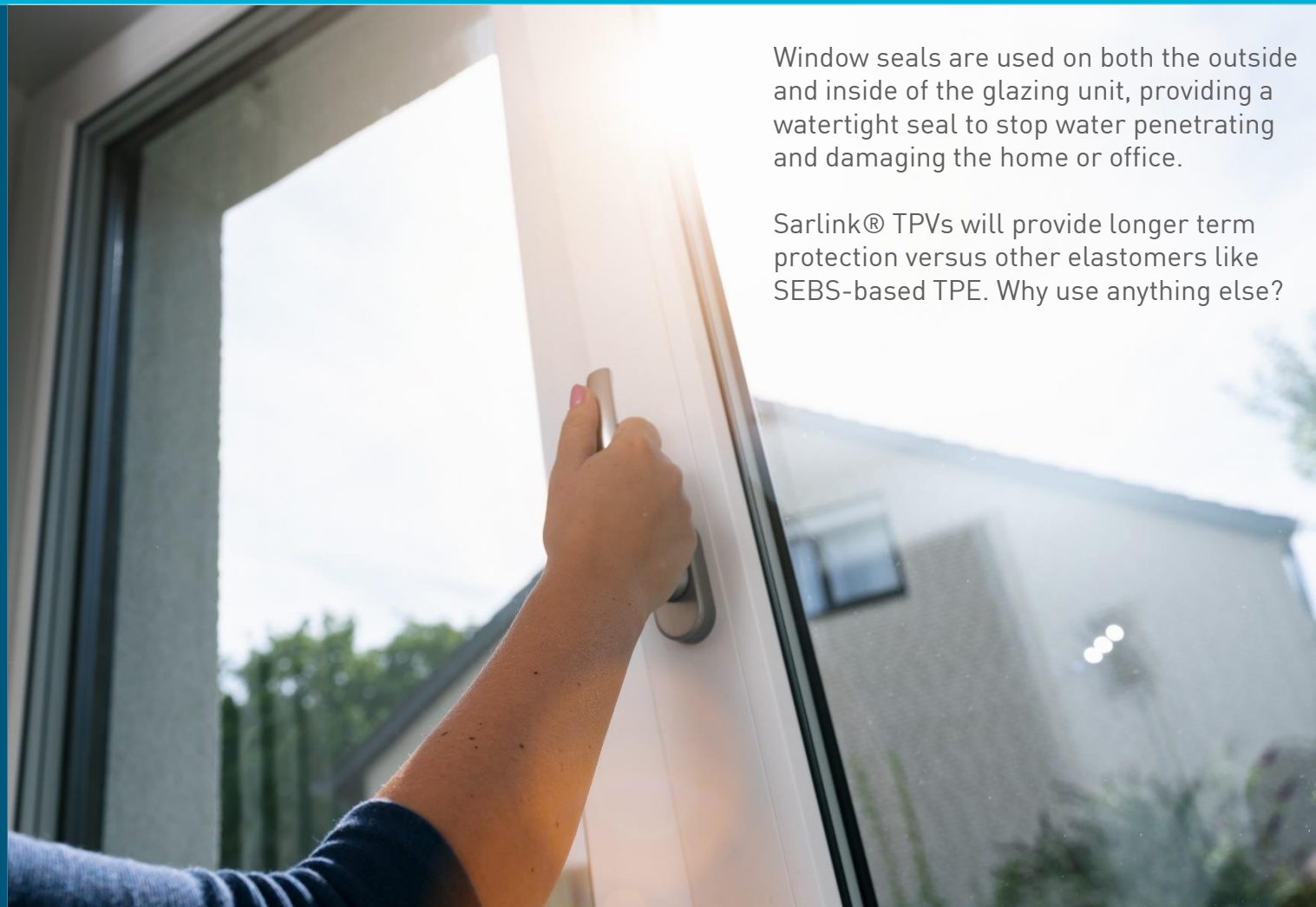
Polymers in Action

Industry: Glazing Seals

Distrupol (alongside Teknor Apex) is your premier materials partner for weather stripping and other extruded seals. We offer a complete portfolio of solutions for rigid, soft and ultra-soft components of dual and tri-durometer extrusions or the entire seal construction. Our TPVs outperform PVC in sealing applications, with better compression set and performance at extreme temperatures versus EPDM rubber. TPVs allow for more design flexibility and customisation.

Sarlink® TPV can also help solve the problems experienced in the market with glazing seals produced from SEBS-based elastomers. SEBS-based TPEs are currently suffering from chemical attack due to the chemicals used in window cleaning products. The chemical usage can result in the seals cracking and allowing water to penetrate the window unit and cause leaks in the home or office. The costs associated to repair such problems can be considerable.

So think smart and switch to Sarlink® TPV for a more durable product.



Window seals are used on both the outside and inside of the glazing unit, providing a watertight seal to stop water penetrating and damaging the home or office.

Sarlink® TPVs will provide longer term protection versus other elastomers like SEBS-based TPE. Why use anything else?



Find us on
LinkedIn

Contact us today for further information.
info@distrupol.com | www.distrupol.com



Polymers in Action

Industry: Glazing Seals

Types of seals extruded from Sarlink® TPV:

- Weather stripping and seals for doors and windows (dynamic and static)
- Door sweeps
- Garage door seals
- Industrial coolers and freezers
- Flame-retardant weather seals
- Structural seals
- Expansion joints
- Window spacers



Find us on
LinkedIn

Contact us today for further information.
info@distrupol.com | www.distrupol.com



	Color	Hardness (5 sec del)	Specific Gravity	Tensile Strength	Elongation	Brittleness Temperature	Weather Resistant	Process		Additional Features
		Shore A or D	---	psi	%	°C		Injection Molding	Extrusion	
		ASTM D2240	ASTM D792	ASTM D412	ASTM D412	ASTM D746				
Sarlink® 3100 Series General Purpose TPVs Applications: seals and gaskets, valves, couplers, washers, flexible elbows, caps and covers, diaphragms, tubing and hose										
Sarlink 3135	Natural, Black	43A	0.93	580	600	<-40	N	●	●	
Sarlink 3140	Natural, Black	46A	0.93	638	600	<-40	N	●	●	
Sarlink 3150	Natural, Black	56A	0.95	740	600	<-40	N	●	●	
Sarlink 3160	Natural, Black	65A	0.95	914	640	<-40	N	●	●	
Sarlink 3170	Natural, Black	75A	0.95	1120	670	<-40	N	●	●	
Sarlink 3180	Natural, Black	84A	0.95	1360	690	<-40	N	●	●	
Sarlink 3190	Natural, Black	92A	0.94	1960	700	<-40	N	●	●	
Sarlink 3139D	Natural, Black	41D	0.94	2680	700	<-30	N	●	●	
Sarlink 3145D	Natural, Black	50D	0.94	3260	700	<-30	N	●	●	



Find us on
LinkedIn

Contact us today for further information.
info@distrupol.com | www.distrupol.com



Follow us
@distrupol

	Color	Hardness (5 sec del)	Specific Gravity	Tensile Strength	Elongation	Brittleness Temperature	Weather Resistant	Process		Additional Features
		Shore A or D	---	MPa	%	°C		Injection Molding	Extrusion	
		ASTM D2240	ASTM D792	ASTM D412	ASTM D412	ASTM D746				
Sarlink® 4100 Series High performance TPVs - Applications: soft and rigid seal components depending on hardness										
Sarlink 4145	Natural, Black	45A	0.96	3.1	550	<-40	N	●	●	Low tension and compression set for improved sealing
Sarlink 4155	Natural, Black	56A	0.96	4.3	550	<-40	N	●	●	
Sarlink 4165	Natural, Black	65A	0.96	5.8	570	<-40	N	●	●	
Sarlink 4175	Natural, Black	72A	0.96	7.2	590	<-40	N	●	●	
Sarlink 4180	Natural, Black	79A	0.96	9.0	620	<-40	N	●	●	
Sarlink 4190	Natural, Black	86A	0.95	13.6	650	<-40	N	●	●	
Sarlink 4139D	Natural, Black	40D	0.95	18.0	700	<-40	N	●	●	


 Find us on
LinkedIn

 Contact us today for further information.
info@distrupol.com | www.distrupol.com

 Follow us
@distrupol

	Color	Hardness (5 sec del)	Specific Gravity	Tensile Strength	Elongation	Brittleness Temperature	Weather Resistant	Process		Additional Features
		Shore A or D	---	MPa	%	°C		Injection Molding	Extrusion	
		ASTM D2240	ASTM D792	ASTM D412	ASTM D412	ASTM D746				
Sarlink® 5700 Series High Performance Extrusion TPVs - Applications: soft and rigid seal components depending on hardness										
Sarlink 5755B	Black	58A	0.97	3.9	550	<-40	Y	●	●	Optimal surface appearance
Sarlink 5765B	Black	68A	0.97	5.5	570	<-40	Y	●	●	
Sarlink 5775B	Black	75A	0.97	6.3	590	<-40	Y	●	●	
Sarlink 5790B	Black	89A	0.97	9.0	600	<-40	Y	●	●	
Sarlink 5740DB	Black	40D	0.96	12.5	640	<-30	Y	●	●	
Low Friction Slip Coating Materials - Applications: seals										
Sarlink 11044D	Natural, Black	40D	0.96	11.0	550	<-20	Y		●	Coextrudes well with TPE, TPV, and EPDM
Sarlink 24946DN-1	Natural	45D	0.92	10.7	590	<-20	Y		●	
Sarlink X11059DB	Black	60D	0.96	23.9	99	<-20	Y		●	
Sarlink® Extrusion Foamable TPVs - Applications: foamed seals										
Sarlink 8145	Natural	47A	0.92	4.5	620	<-40	N		●	Can be coextruded with TPVs, TPOs, and PP
Sarlink 8168	Natural	67A	0.95	6.7	698	<-40	N		●	


 Find us on
LinkedIn

 Contact us today for further information.
info@distrupol.com | www.distrupol.com

 Follow us
@distrupol

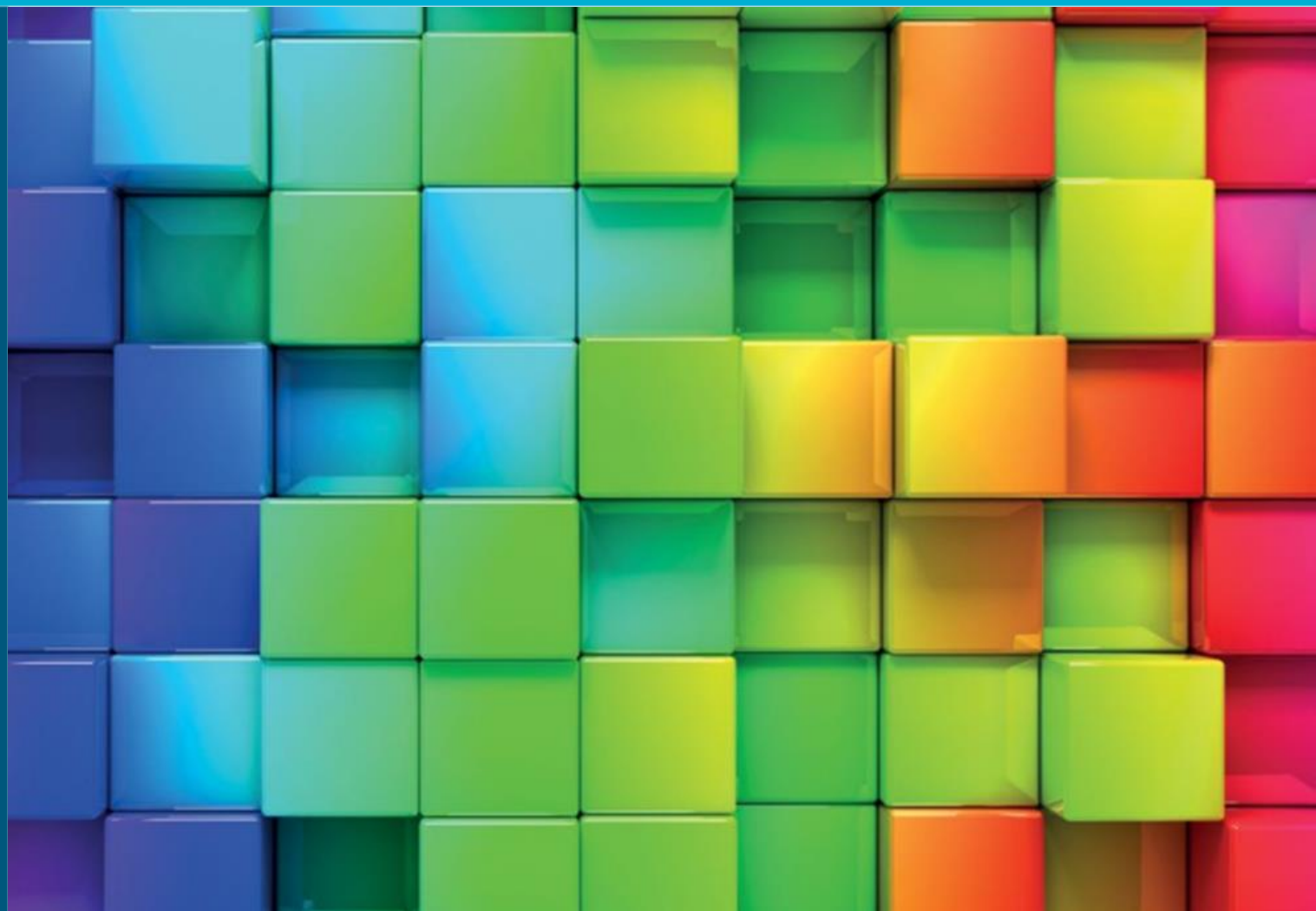
Colour Compounds

Distrupol Colour

One of the major advantages of thermoplastic materials is their ability to be coloured to a huge range of colours and shades. From the whites, blacks and greys of consumer electronics and business machines, to the bright reds, greens and blues that attract the eye and make products more appealing to prospective customers.

- 48 hours colour match service
- Sample material as low as 25kg
- LAB colour measurement control
- On site colour match service
- From 25kg to truckload supplies of colour
- Colour compounding on nearly all chemistries

If you want your office chair moulding in a particular colour, enhanced with anti-microbial properties or even with scents and fragrance adding, Distrupol can offer this compounding service.



Find us on
LinkedIn

Contact us today for further information.
info@distrupol.com | www.distrupol.com



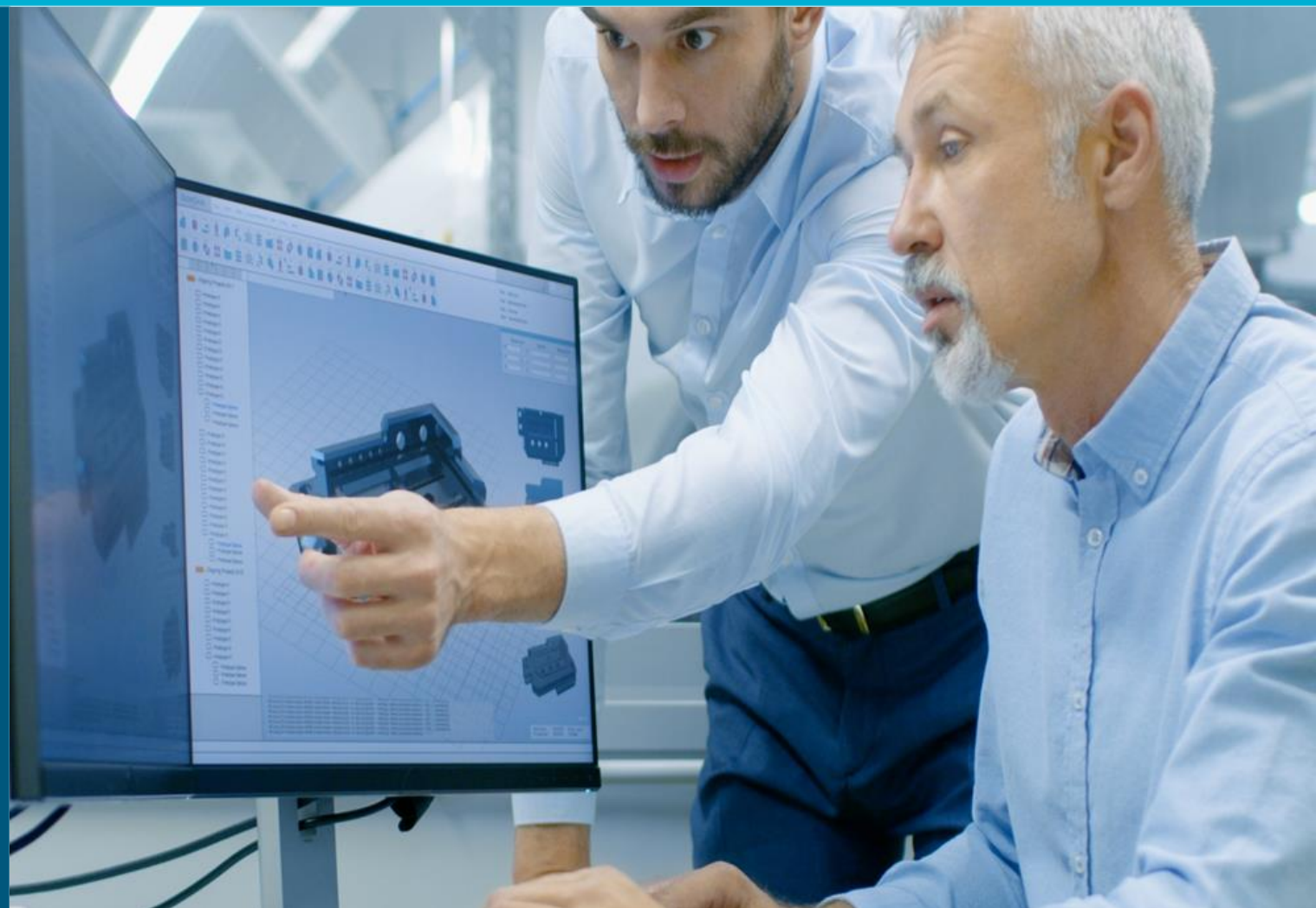
Technical Support

Design · Develop · Deliver

To support customers with their new development, Distrupol provides an engineering support package with time served and skilled engineers to help you with your project.

- Design support and advice
- Finite Element Analysis
- Moldex 3D® filling simulations
- Polymer selection services
- Troubleshooting support
- Fault identification via laboratory analysis
- Process optimisation
- Innovation
- Secondary operation advice
- Access to manufacturers' scientists for support backup

So challenge us with your new project and use the support package that we provide. We're sure you won't be disappointed.



Find us on
LinkedIn

Contact us today for further information.
info@distrupol.com | www.distrupol.com



Complete Portfolio

From Polyethylene to PEEK

As well as the products mentioned, we also offer 4,000 other polymer grades to cater for all markets and industries, with local warehousing in all Distrupol regions. Contact your local sales or technical representative to find out more.

Delrin® POM	Zytel® PA6 & 66	Crastin® PBT	Zytel® HTN PPA	INEOS® EBA	Rynite® PET-GF
Hytrel® TEEE	INEOS® PP	INEOS® HDPE	Riblene® LDPE	Kibiton® SBC	Trifilon® PLA-HEMP
Polylac® ABS	Wonderlite® PC	Kibisan® SAN	Flexirene® LLDPE	Toray® PPS	Acrystex® SMMA
Dryflex® TPE	Kibilac® ASA	Wonderloy® PCABS	Flexirene® MDPE	RTP® PEEK-GF	Polyrex® PS
Diakon® PMMA	Sarlink® TPV	INEOS® PVC	Greenflex® EVA	Polylac® MABS	Zytel LC® PA 10/10



Find us on
LinkedIn

Contact us today for further information.
info@distrupol.com | www.distrupol.com



Follow us
@distrupol